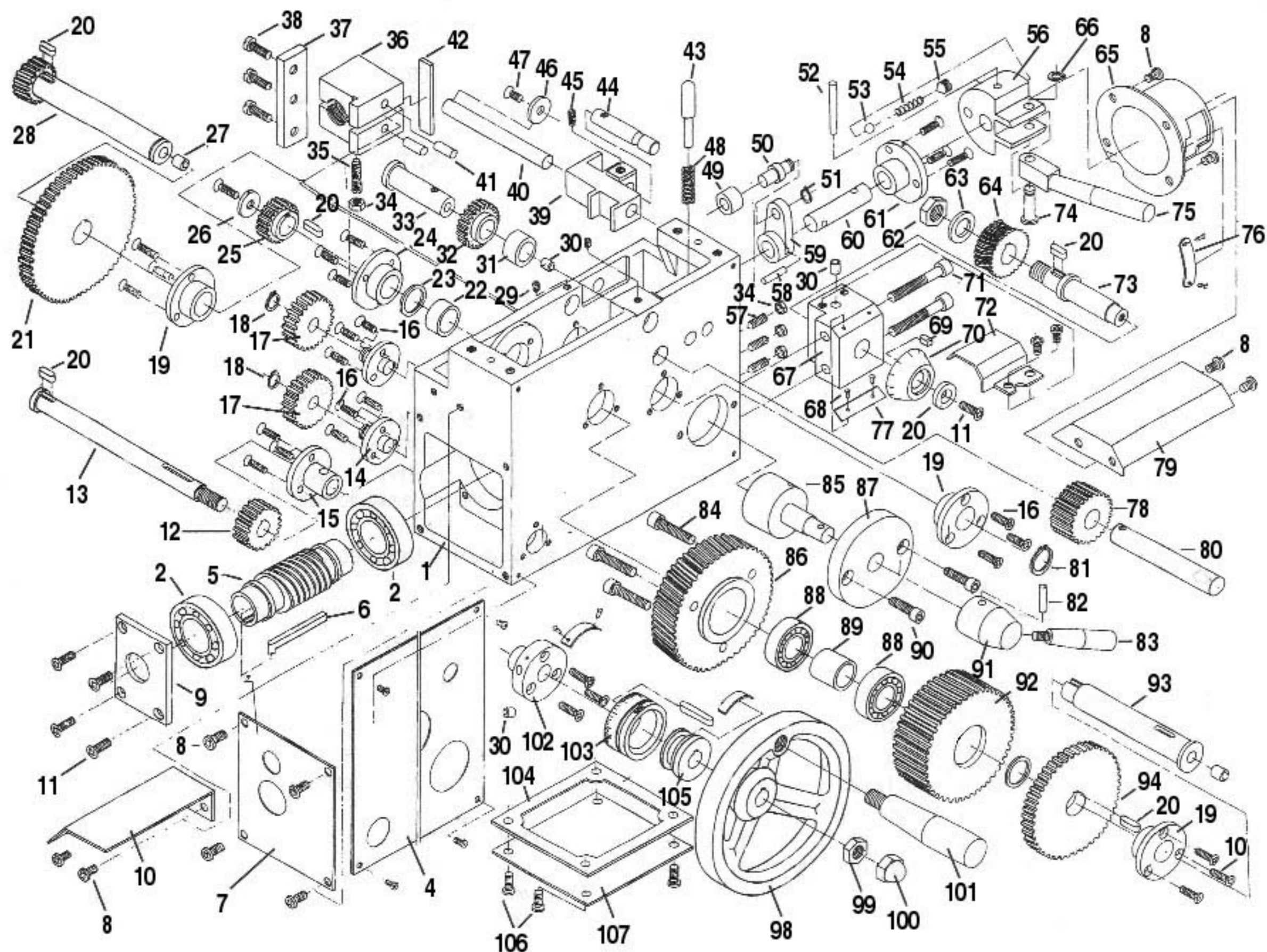


Apron



Or Visit www.Smithy.com

Apron

Diagram Number	Part Number	Reference Number	Description
1	G09001	6-38	Apron
2	G09002	GB292	Ball bearing 46105
3	G09003	GB818	Setscrew M3x10
4	G09004	6-71	Plate
5	G09005	6-33	Worm
6	G09006	6-47	L-key
7	G09007	6-75	Slide cover
8	G09008	GB818	Panhead Phillips screw M5x8
9	G09009	6-34	Bearing cover
10	G09010	6-35	Leadscrew cover(I)
11	G09011	GB819	Countersunk Phillips screw M5x16
12	G09012	6-41	Gear t20
13	G09013	6-39	Shaft (II)
14	G09014	6-61	Shaft cover
15	G09015	6-40	Bushing(IV)
16	G09016	GB819	Flatpoint setscrew M4x16
17	G09017	6-62	Gear t24

Diagram Number	Part Number	Reference Number	Description
18	G09018	GB894	Snap ring
19	G09019	6-60	Gear shaft cover (V)
20	G09020	GB1096 (S21522)	Key 4x12
21	G09021	6-58	Gear t65
22	G09022	6-56	Spacer
23	G09023	6-53	Washer
24	G09024	6-55	Shaft cover (IV)
25	G09025	6-54	Gear with keyway
26	G09026	6-53	Washer
27	G09027	Use C30035	Oiler 8mmx50190
28	G09028	6-59	Gear shaft
29	G09029	GB71 (S11946)	Conepoint setscrew M4x6
30	G09030	GB1155	Oiler
31	G09031	6-14	Bushing (II)
32	G09032	6-13	Gear t20
33	G09033	6-15	Shaft (I)
34	G09034	GB6172	Hex nut M5

Apron

Diagram Number	Part Number	Reference Number	Description
35	G09035	GB75	Conepoint setscrew M5x25
36	G09036	6-42	Half nut
37	G09037	6-43	Mount piece
38	G09038	GB65	Panhead Phillips screw M5x16
39	G09039	6-22	Fork
40	G09040	6-21	Stud
41	G09041	GB119	Taper pin B6x16
42	G09042	6-63	Stopping plate (Gib)
43	G09043	6-46	Locking pin (I)
44	G09044	6-48	Locking stud (II)
45	G09045	GB71	Conepoint slotted setscrew M5x12
46	G09046	6-70 (S11512)	Washer M5
47	G09047	GB819	Panhead Phillips screw M5x10
48	G09048	6-47	Spring
49	G09049	6-23	Bushing (III)
50	G09050	6-24	Fulcrum (I)
51	G09051	GB894	Snap ring
52	G09052	GB117	Taper pin 4x40

Diagram Number	Part Number	Reference Number	Description
53	G09053	GB308	Ball 6.5
54	G09054	GB2089	Spring 0.8x5x25
55	G09055	GB71	Conepoint slotted setscrew M8x10
56	G09056	6-26	Power feed handle seat
57	G09057	GB71	Setscrew M5x16
58	G09058	GB117	Taper pin A4x20
59	G09059	6-29	Crank arm
60	G09060	6-27	Arm shaft
61	G09061	6-28	Shaft pin seat
62	G09062	GB6172	Hex nut M12
63	G09063	6-65	Washer M12
64	G09064	6-66	Worm gear
65	G09065	6-25	Positioning cover
66	G09066	GB894	snap ring
67	G09067	6-67	Threading dial seat
68	G09068	GB827	Rivet 2x5

Apron

Diagram Number	Part Number	Reference Number	Description
69	G09069	GB1096	Key 4x8
70	G09070	6-69	Threading dial
71	G09071	(S12051)GB70	Sockethead capscrew M6x45
72	G09072	6-64	Worm cover
73	G09073	6-68	Threading dial shaft
74	G09074	6-31	Clevis pin
75	G09075	6-30	Handle
76	G09076	6-49	Feeding direction plate
77	G09077	ZQ4124-63	Indicator
78	G09078	6-50	Gear t23
79	G09079	6-78	Leadscrew cover (II)
80	G09080	6-51	Shaft (III)
81	G09081	GB894	Snap ring
82	G09082	GB117	Taper pin A4x26
83	G09083	GB4141.1	Handle M6x50
84	G09084	GB70	Sockethead capscrew M6x30
85	G09085	6-44	Half-nut closer
86	G09086	6-32	Helical gear t60

Diagram Number	Part Number	Reference Number	Description
87	G09087	6-45	Half-nut closer seat
88	G09088	GB276	Ball bearing
89	G09089	6-73	Bushing (V)
90	G09090	GB70	Sockethead capscrew M5x20
91	G09091	CJ0625.3-21	Handle seat
92	G09092	6-74	Gear t52
93	G09093	6-57	Shaft (IV)
94	G09094	6-72	Gear with keyway
95	G09095	GB819	Setscrew M4x20
96	G09096	GB1096	Key4x28
97	G09097	CJ0625.3-19	Spring piece
98	G09098	GB4141.22	Handwheel B12x125
99	G09099	S18155	Hex nut M10
100	G09100	S18160	Acorn nut M10
101	G09101	GB4141.5	Handle M10x80
102	G09102	6-37	Shaft cover (II)

Apron

Diagram Number	Part Number	Reference Number	Description
103	G09103	6-36	Dial
104	G09104	6-76	Gasket
105	G09105	6-18	Dial seat
106	G09106	GB818	Panhead Phillips screw M5x12
107	G09107	6-77	Bottom cover
	G99-000		Entire Apron Assembly